

# TRAPI

TR AVERS ■ PLEYT ■ PISTON



Turbo Suction Hose Air Tube

Air Spring Holder Travers Air Spring

Spring Bottom Pistons Bus Stabiliz

nomo Involutes Turbo Suction Hose

Stabilizator

## General Catalog

2026

# TRAPI

TRAVERS ■ PLEYT ■ PISTON

**"Comfort"**  
is made possible  
by the correct  
combination of parts.



**MORE EVERY DAY**

# Index

**AIR SPRING LOWER PISTONS**

**AIR SPRING TOP PLATES**

**AIR SPRING HOLDER TRAVERSES**

**STABILIZER BARS**

**CHASIS CONNECTION EQUIPMENTS**

**TRANSMISSION MAST**

**AIR SUSPENSION EQUIPMENT**

**SERVICE ASSEMBLY (WITHOUT PISTON)**

**ROLL AIR SPRINGS**

**COMPLETE WITH PISTON**

**CONVOLUTED AIR SPRINGS**

**AMERICAN AIR SPRINGS**

**AIR SPRING LOWER PLASTIC PISTONS**



## HAKKIMIZDA / ABOUT US

---

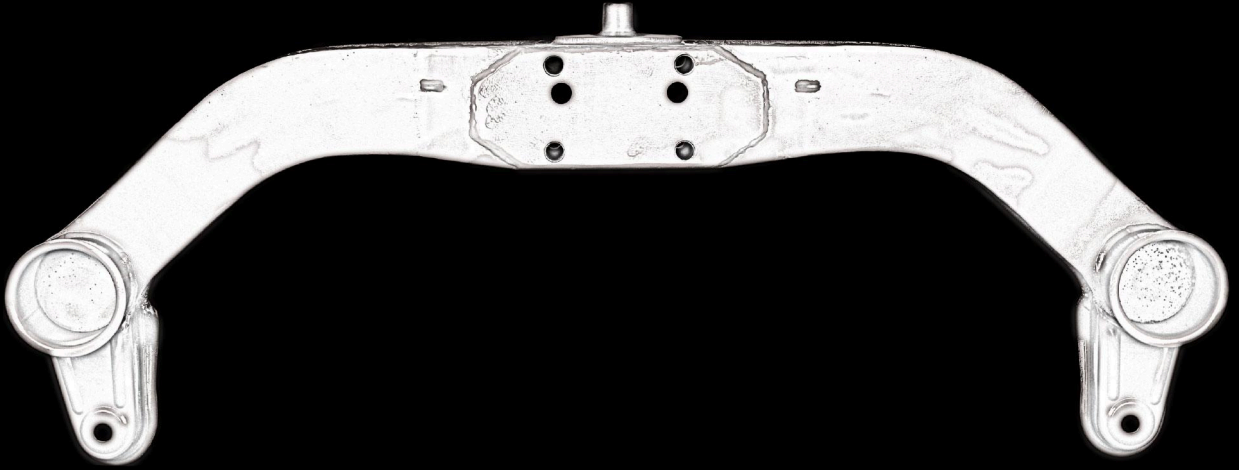
Mercedes-Benz otobüs yedek parçaları ile imalat sektörüne giriş yapan firmamız, Mercedes-Benz, Setra, Neoplan, Man, Bova, Temsa, Bmc, Otokar ve Güteryüz - Cobra marka otobüslerin; piston, pleyt, travers, travers bağlantı ekipmanları, viraj denge milleri, şase bağlantı ekipmanları gibi birçok mekanik yedek parça üretimi ve Mercedes-Benz, Renault, Man, Volvo, Daf marka kamyon ve tırların; piston, pleyt gibi yedek parçalarının üretimi ile imalat yelpazesini gün geçtikçe genişletmektedir.

Firmamız, ürün grupları dahilindeki tüm yedek parçaları üretebilme kapasitesine sahiptir.

Our company which enters the manufacturing sector with spare parts of Mercedes-Benz bus, Mercedes-Benz, Setra, Neoplan, Man, Bova, Temsa, Bmc, Otokar and Güteryüz - Cobra brand buses; the production of many mechanical spare parts such as piston, plate, traverse, traverse connection equipments, stabiliser, chassis connection equipments and trucks of Mercedes-Benz, Renault, Man, Volvo, Daf brand; piston, and plate spare parts, and the manufacturing sector is expanding day by day.

Our company has the capacity to produce all spare parts in product groups.

**AIR SPRING HOLDER TRAVERSESES**  
**KÖRÜK TAŞIYICI TRAVERSLELER**





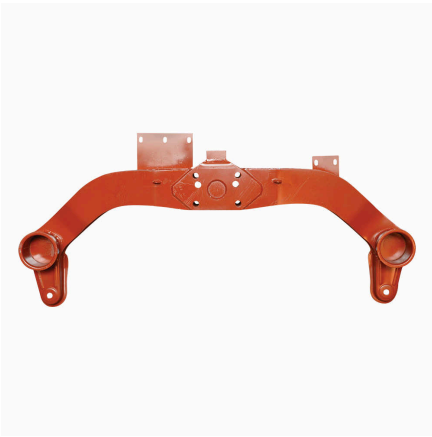
**TRP-3000** MERCEDES 0403 AIR SPRING HOLDER TRAVERS

OEM REFERENCES		CROSS REFERENCES	
MERCEDES	3563201275		



**TRP-3001** MAN AIR SPRING HOLDER TRAVERS

OEM REFERENCES		CROSS REFERENCES	



**TRP-3002-L** MERCEDES TRAVEGO AIR SPRING HOLDER TRAVERS (RIGHT-LEFT)

OEM REFERENCES		CROSS REFERENCES	
MERCEDES	6293202275		



**TRP-3002-R** MERCEDES TRAVEGO AIR SPRING HOLDER TRAVERS (RIGHT)

OEM REFERENCES		CROSS REFERENCES	
MERCEDES	6293202375		
MERCEDES	6343202475		



## TRP-3003 MERCEDES TRAVEGO AIR SPRING HOLDER TRAVERS

OEM REFERENCES		CROSS REFERENCES	
MERCEDES	6293202275		
MERCEDES	6343202575		



## TRP-3004 MERCEDES 0303-0304 AIR SPRING HOLDER TRAVERS

OEM REFERENCES		CROSS REFERENCES	
MERCEDES	6003200175		



## TRP-3005 GULERYUZ-COBRA AIR SPRING HOLDER TRAVERS (9M)

OEM REFERENCES		CROSS REFERENCES	
COBRA	GL160		



## TRP-3006 GULERYUZ COBRA AIR SPRING HOLDER TRAVERS (12M)

OEM REFERENCES		CROSS REFERENCES	
COBRA	GL272		



**TRP-3007** BMC PROBUS AIR SPRING HOLDER TRAVERS

OEM REFERENCES		CROSS REFERENCES	
BMC	54RS710068		
BMC	54RS308514		



**TRP-3008** BMC PROBUS AIR SPRING HOLDER TRAVERS

OEM REFERENCES		CROSS REFERENCES	



**TRP-3009** MERCEDES 0403 TRAVERS CONNECTION BOLT

OEM REFERENCES		CROSS REFERENCES	
MERCEDES	0029904022		



**TRP-3010** MERCEDES 0403 TRAVERSE CONNECTION BOLT

OEM REFERENCES		CROSS REFERENCES	
MERCEDES	0009901700		



**TRP-3011** MAN TRAVERSE CONNECTION

OEM REFERENCES		CROSS REFERENCES	



**TRP-3012** GULERYUZ COBRA TRAVERSE CONNECTION

OEM REFERENCES		CROSS REFERENCES	



**TRP-3013** MERCEDES TRAVEGO TRAVERSE CONNECTION

OEM REFERENCES		CROSS REFERENCES	
MERCEDES	6293510125		



**TRP-3014** MERCEDES 0303-0304 TRAVERSE CONNECTION

OEM REFERENCES		CROSS REFERENCES	
MERCEDES	6343510125		



**TRP-3015** TEZELLER TRAVERSE CONNECTION

OEM REFERENCES		CROSS REFERENCES	



**TRP-3016** GULERYUZ-COBRA AIR SPRING HOLDER TRAVERS

OEM REFERENCES		CROSS REFERENCES	
COBRA	GL9GL160		



**TRP-3017** TRAVEGO AIR SPRING HOLDER TRAVERS (NEW MODEL RIGHT)

OEM REFERENCES		CROSS REFERENCES	



**TRP-3018** TRAVEGO AIR SPRING HOLDER TRAVERS (NEW MODEL LEFT)

OEM REFERENCES		CROSS REFERENCES	

**TRP-3019** 403 CONNECTION LOAF



OEM REFERENCES		CROSS REFERENCES	

**TRP-3020-6** TRAVEGO AIR SPRING HOLDER TRAVERS NEW  
MODEL-4 8MM



OEM REFERENCES		CROSS REFERENCES	

**TRP-3022** MERCEDES AIR SPRING HOLDER TRAVERS



OEM REFERENCES		CROSS REFERENCES	

**TRP-3023** MERCEDES AIR SPRING HOLDER TRAVERS



OEM REFERENCES		CROSS REFERENCES	

# Notes



A series of horizontal dotted lines for writing notes, filling the majority of the page.



*Safe Travels...*  
**With**

**TRAPI**  
TR AVERS ■ PLEYT ■ PISTON



[trapi.com.tr](https://trapi.com.tr)

